

# Weigh Modules • Tank and Hopper Kits

Color  
Literature  
Available by  
Request

## RL9000 TWM Series

### Tank, Hopper & Vessel Weighing Assembly, Rice Lake Weighing Systems



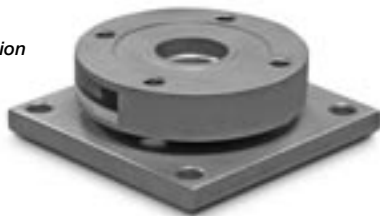
*Picture is a representation of actual product*



The RL9000 TWM Series stainless steel weigh module is ideal for use in tank, hopper, vessel, and many other applications. The low-profile design allows for economical solutions in a competitive marketplace. This rugged, high-precision mount is designed for easy installation and does not require check rods or other stabilizing hardware. The RL9000 TWM mount has the added feature of self centering, allowing for side loads without sacrificing performance. The stainless steel construction and welded seal offer additional protection in washdown areas.



*Assembly with integral RL9000 TWM compression disk load cell. See next page for load cell specifications.*



#### APPLICATIONS:

- Tank, hopper, or vessel weighing
- Scale platforms and screw feeders

#### STANDARD FEATURES:

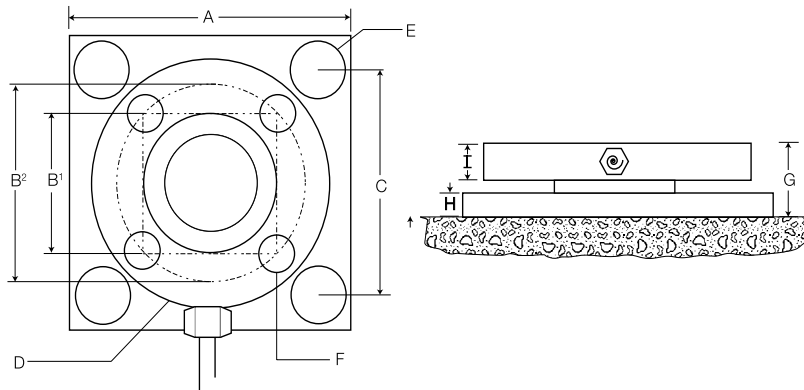
- Capacities: 1000-450,000 lb
- Very low profile design
- 3 mV/V output
- Self-centering in all directions
- Self-checking assembly
- Offers 100% sideload, 100% uplift and 300% over load protection
- Stainless steel construction\*
- Welded seal
- Weighs accurately with as much as a 3° on-parallel load
- Integral 25' cable
- Replaceable load cell cable (HE series only)

#### OPTIONAL FEATURES:

- Full hermetic seal (HE series)
- Top plates
- Stainless steel base plates available for 450K
- High temperature (400°F) option

*\*150K-450K have mild steel painted base plate*

# RL9000 TWM Series Specifications



RATED CAPACITY	DIMENSIONS									
	A	B1	B2	C	D	E	F	G	H	I
<b>kg/mm</b>										
1-15k	4.0	2.1 sq	NA	3.25	3.5	0.4	3/8-16	1k 1.35 15k 1.60	1 k 0.8 15 k 0.63	0.75
20-50k	7.0	3.75 sq	NA	5.5	6.0	0.63	1/2-13	2.48	0.75	1.3
60-100k	8.0	4.25 sq	NA	6.5	7.0	0.81	3/4-16	2.50	1.0	1.3
150-200k	10.0	NA	7.88 BC	8.0	9.0	1.1	1"-14	4.75	2.0	1.7
250-450k	12.0	NA	8.38 BC	10.0	10.0	1.3	7/8-14	6.42	3.0	2.25

## LOAD CELL SPECIFICATIONS:

<b>Full Scale Output:</b>	3 mv/v +/- .1%	<b>Insulation Resistance:</b>	5000 megohms
<b>Bridge Resistance:</b>	350 ohms	<b>Seal Type:</b>	Welded steel IP 67/Hermetically sealed IP68
<b>Material/Finish:</b>	Stainless steel*	<b>Cable Length:</b>	25'
<b>Safe Overload:</b>	150% F.S.	<b>Cable Color Code:</b>	+.....Exc Green -.....Exc Black +.....Sig White -.....Sig Red
<b>Rated Excitation:</b>	10 V DC	<b>Warranty:</b>	2 years
<b>Nonlinearity:</b>	0.05%		
<b>Hysteresis:</b>	0.02%		
<b>Temperature:</b>	10° to 110° F		

### RL9000 TWM SERIES ORDER INFORMATION

Load Rating	Part #	Price
<b>Single Module</b>		
1000 lb	84353	
2500 lb	84354	
5000 lb	84355	
10,000 lb	84356	
15,000 lb	84357	
20,000 lb	84358	
25,000 lb	84359	
35,000 lb	84360	
50,000 lb	84361	
60,000 lb	84362	
75,000 lb	84363	
100,000 lb	84364	
150,000 lb	84365	
200,000 lb	84366	
250,000 lb	84368	
300,000 lb	84369	
400,000 lb	84370	
450,000 lb	84371	
<b>Top Plates (Stainless Steel)</b>		
1-15K	91207	
20-50K	91210	
60-100K	91211	
150-200K	91213	
255-450K	91215	

### RL9000 TWM HE SERIES ORDER INFORMATION

Load Rating	Part #	Price
<b>Single Module</b>		
1000 lb	86098	
2500 lb	86099	
5000 lb	86100	
10,000 lb	86101	
15,000 lb	86102	
20,000 lb	86103	
25,000 lb	86104	
35,000 lb	86105	
50,000 lb	86106	
60,000 lb	86107	
75,000 lb	86108	
100,000 lb	86109	
150,000 lb	86110	
200,000 lb	86111	
250,000 lb	86112	
300,000 lb	86113	
400,000 lb	86114	
450,000 lb	86115	
Replacement cable	86116	

\* 150K-450K have mild steel painted base plates