

Load Cells and Weigh Modules

SURVIVOR® 2100HE Weigh Modules



Load Cell Certifications



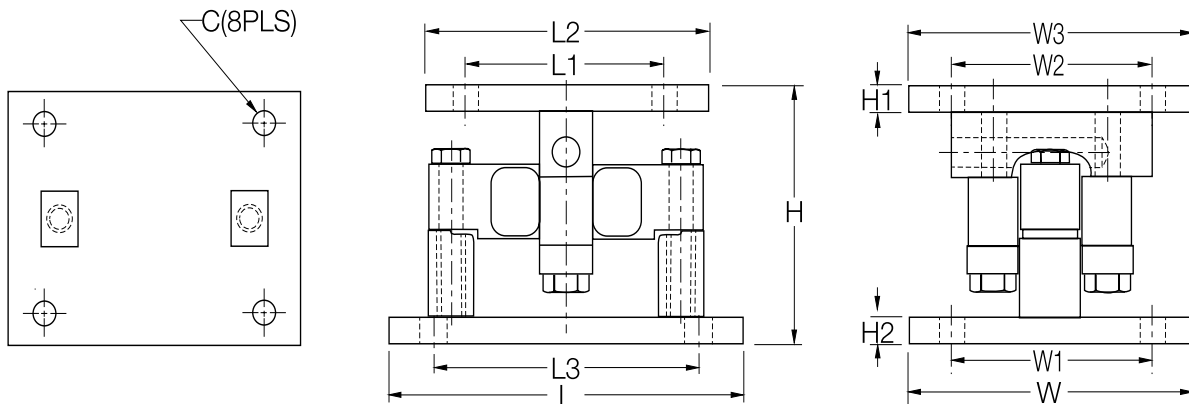
Standard Features

- All stainless steel construction
- Welded seal, stainless steel load cells, IP67, guaranteed waterproof
- NTEP-certified load cells, 5000d, Class III/10,000d, Class III L Multiple Cell
- Bolt-in-place design; module bolts directly to tank leg without requiring additional load buttons or mounting plates
- Self-checking design with lift-off/tip-over protection
- 2-year limited warranty

Complete Kit Includes:

- 1 EL604STA NEMA 4X stainless steel signal-trim junction box
- 3 or 4 2100HE stainless steel compression mounts
- 3 or 4 RL75060S stainless steel, welded seal single-ended beam load cells
- 25' of Hostile Environment EL147HE SURVIVOR® load cell cable

Specifications



RATED CAPACITY	DIMENSIONS											
	C	H	H1	H2	L	L1	L2	L3	W	W1	W2	W3
lb/inches												
20,000-25,000	.78	6.85	.75	.75	10.00	6.00	8.00	7.50	8.00	6.00	6.00	8.00
35,000-100,000	1.13	9.42	1.00	1.00	14.00	6.50	9.00	11.50	10.00	7.50	6.50	9.00
kg/mm												
9071.9-11,339.8	19.8	174.0	19.1	19.1	254.0	152.4	203.2	190.5	203.2	152.4	152.4	203.2
15,875.7-45,359.2	28.7	239.3	25.4	25.4	355.6	165.1	228.6	292.1	254.0	190.5	165.1	228.6

Specifications subject to change without notice

contact: www.iwsystems.ca E-mail: info@iwsystems.ca

RICE LAKE WEIGHING SYSTEMS
Commitment Beyond Measurement™



Weigh Modules